



# TrackingTheWorld

GPS Tracking Solutions

TrackingTheWorld.com

## AVL-55

### Vehicle Tracking Device

## USER MANUAL



Document Title	AVL-55 User Manual
Version	1.05
Date	2014-04-28
Status	Release
Document Control ID	TTW-AVL55-UM001

**General Notes**

TrackingTheWorld offers this information as a service to its customers, to support application and engineering efforts that use the products designed by TrackingTheWorld. The information provided is based upon requirements specifically provided to TrackingTheWorld by the customers. TrackingTheWorld has not undertaken any independent search for additional relevant information, including any information that may be in the customer's possession. Furthermore, system validation of this product designed by TrackingTheWorld within a larger electronic system remains the responsibility of the customer or the customer's system integrator. All specifications supplied herein are subject to change.

**Copyright**

This document contains proprietary technical information which is the property of TrackingTheWorld, copying of this document and giving it to others and the using or communication of the contents thereof, are forbidden without express authority. Offenders are liable to the payment of damages. All rights reserved in the event of grant of a patent or the registration of a utility model or design. All specification supplied herein are subject to change without notice at any time.

Copyright © TrackingTheWorld 2016

**For More Information:** Please contact TrackingTheWorld, 1633 Bayshore Highway, Suite 390, Burlingame, CA. 94010, USA  
Phone: +1.650.692.8100 – Email: [info@trackingtheworld.com](mailto:info@trackingtheworld.com) – Website: [www.trackingtheworld.com](http://www.trackingtheworld.com)

Copyright © TrackingTheWorld. All rights reserved. Information in this publication supersedes that in all previously published material. Specification and price change privileges reserved. All trade names referenced are the service marks, trademarks, or registered trademarks of their respective companies.

## Contents

1 Introduction .....	7
1.1. Reference .....	7
1.2. Terms and Abbreviations .....	7
2 Product Overview .....	8
2.1. Check Part List .....	8
2.2. Parts List .....	9
2.3. Interface Definition .....	9
2.4. AVL-55 User Cable Color .....	10
3 .Getting Started .....	11
3.1. Opening the Case .....	11
3.2. Closing the Case .....	11
3.3. Installing a SIM Card .....	12
3.4. Installing the Internal Backup Battery .....	12
3.5. Switch ON the Backup Battery .....	13
3.6. Power Connection .....	13
3.7. Ignition Detection .....	14
3.8. Digital Inputs .....	14
3.9. Digital Outputs .....	15
3.10. Device Status LED .....	17
3.11. Motion Sensor direction .....	18

**For More Information:** Please contact TrackingTheWorld, 1633 Bayshore Highway, Suite 390, Burlingame, CA. 94010, USA  
 Phone: +1.650.692.8100 – Email: [info@trackingtheworld.com](mailto:info@trackingtheworld.com) – Website: [www.trackingtheworld.com](http://www.trackingtheworld.com)

Copyright © TrackingTheWorld. All rights reserved. Information in this publication supersedes that in all previously published material. Specification and price change privileges reserved. All trade names referenced are the service marks, trademarks, or registered trademarks of their respective companies.

## Table Index

Table 1. AVL-55 Protocol Reference.....	7
Table 2. Terms and Abbreviations.....	7
Table 3. Part List.....	9
Table 4. Description of 6 PIN Connections .....	10
Table 5. AVL-55 User Cable Colour definition .....	10
Table 6. Electrical Characteristics of Ignition Detection .....	14
Table 7. Electrical Characteristics of the digital inputs .....	14
Table 8. Electrical Characteristics of Digital Outputs.....	16
Table 9. Definition of Device status and LED .....	18

**For More Information:** Please contact TrackingTheWorld, 1633 Bayshore Highway, Suite 390, Burlingame, CA. 94010, USA  
 Phone: +1.650.692.8100 – Email: [info@trackingtheworld.com](mailto:info@trackingtheworld.com) – Website: [www.trackingtheworld.com](http://www.trackingtheworld.com)

Copyright © TrackingTheWorld. All rights reserved. Information in this publication supersedes that in all previously published material. Specification and price change privileges reserved. All trade names referenced are the service marks, trademarks, or registered trademarks of their respective companies.

## Figure Index

Figure 1. Appearance of AVL-55 .....	8
Figure 2. The 6 PIN connector on the AVL-55.....	9
Figure 3. Opening the Case .....	11
Figure 4. Closing the Case.....	11
Figure 5. SIM Card Installation.....	12
Figure 6. Backup Battery Installation.....	12
Figure 7. Switch and ON/OFF position.....	13
Figure 8. Typical Power Connection .....	13
Figure 9. Typical Ignition Detection.....	14
Figure 10. Typical Digital Input Connection.....	15
Figure 11. Digital Output Internal Drive Circuit.....	16
Figure 12. Typical Connection with Relay .....	16
Figure 13. Typical Connection with LED .....	17
Figure 14. AVL-55 LED on the Case .....	17
Figure 15. Motion sensor direction .....	19

**For More Information:** Please contact TrackingTheWorld, 1633 Bayshore Highway, Suite 390, Burlingame, CA. 94010, USA  
 Phone: +1.650.692.8100 – Email: [info@trackingtheworld.com](mailto:info@trackingtheworld.com) – Website: [www.trackingtheworld.com](http://www.trackingtheworld.com)

Copyright © TrackingTheWorld. All rights reserved. Information in this publication supersedes that in all previously published material. Specification and price change privileges reserved. All trade names referenced are the service marks, trademarks, or registered trademarks of their respective companies.

**Revision History**

Revision	Date	Author	Description of change
1.01	2012-7-3	Owen Feng	Initial
1.02	2012-11-16	Owen Feng	1-change the internal circuit
1.03	2013-11-22	Owen Feng	Change working voltage range
1.04	2014-1-10	York Zhu	Change the figure of “Typical Connection with Relay” and change the description of relay about flyback diode.
1.05	2014-4-28	Owen	Add acc sensor xyz description

**For More Information:** Please contact TrackingTheWorld, 1633 Bayshore Highway, Suite 390, Burlingame, CA. 94010, USA  
Phone: +1.650.692.8100 – Email: [info@trackingtheworld.com](mailto:info@trackingtheworld.com) – Website: [www.trackingtheworld.com](http://www.trackingtheworld.com)

Copyright © TrackingTheWorld. All rights reserved. Information in this publication supersedes that in all previously published material. Specification and price change privileges reserved. All trade names referenced are the service marks, trademarks, or registered trademarks of their respective companies.

# 1 Introduction

The AVL-55 is a powerful GPS locator designed for vehicle or asset tracking. It has superior receiver sensitivity, fast TTFF (Time to First Fix) and supports Dual-Band GSM frequencies 850/900/1800/1900, its location can be monitored in real time or be periodically tracked by a backend server or other specified terminals. The AVL-55 has multiple input/output interfaces that can be used for monitoring or controlling external devices. Based on the integrated @Track protocol, the AVL-55 can communicate with a backend server through the GPRS/GSM network to transfer reports of Emergency, geo-fence boundary crossings, low backup battery or scheduled GPS position as well as many other useful functions. Users can also use AVL-55 to monitor the status of a vehicle and control the vehicle by its external relay output. System Integrators can easily setup their tracking systems based on the full-featured @Track protocol.

## 1.1. Reference

**Table 1. AVL-55 Protocol Reference**

SN	Document name	Remark
[1]	AVL-55 @Track Air Interface Protocol	The air protocol interface between AVL-55 and backend server.

## 1.2. Terms and Abbreviations

**Table 2. Terms and Abbreviations**

Abbreviation	Description
AGND	Analog Ground
AIN	Analog Input
DIN	Digital Input
DOUT	Digital Output
GND	Ground
MIC	Microphone
RXD	Receive Data
TXD	Transmit Data
SPKN	Speaker Negative
SPKP	Speaker Positive

**For More Information:** Please contact TrackingTheWorld, 1633 Bayshore Highway, Suite 390, Burlingame, CA. 94010, USA  
Phone: +1.650.692.8100 – Email: [info@trackingtheworld.com](mailto:info@trackingtheworld.com) – Website: [www.trackingtheworld.com](http://www.trackingtheworld.com)

Copyright © TrackingTheWorld. All rights reserved. Information in this publication supersedes that in all previously published material. Specification and price change privileges reserved. All trade names referenced are the service marks, trademarks, or registered trademarks of their respective companies.

## 2 Product Overview

### 2.1. Check Part List

Before starting, check all the following items have been included with your AVL-55. If anything is missing, please contact your supplier.



**Figure 1.      Appearance of AVL-55**



**For More Information:** Please contact TrackingTheWorld, 1633 Bayshore Highway, Suite 390, Burlingame, CA. 94010, USA  
Phone: +1.650.692.8100 – Email: [info@trackingtheworld.com](mailto:info@trackingtheworld.com) – Website: [www.trackingtheworld.com](http://www.trackingtheworld.com)

Copyright © TrackingTheWorld. All rights reserved. Information in this publication supersedes that in all previously published material. Specification and price change privileges reserved. All trade names referenced are the service marks, trademarks, or registered trademarks of their respective companies.



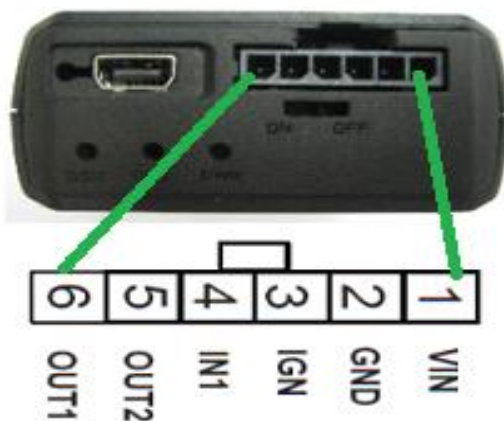
## 2.2. Parts List

**Table 3. Part List**

Name	Picture
AVL-55 Locator	63mm*50mm*21.8mm
User Cable	
DATA_CABLE_M (Optional)	

## 2.3. Interface Definition

The AVL-55 has a 6 PIN interface connector. It contains the connections for power, I/O. The sequence and definition of the 6PIN connector are shown in following figure:



**Figure 2. The 6 PIN connector on the AVL-55**

**For More Information:** Please contact TrackingTheWorld, 1633 Bayshore Highway, Suite 390, Burlingame, CA. 94010, USA  
Phone: +1.650.692.8100 – Email: [info@trackingtheworld.com](mailto:info@trackingtheworld.com) – Website: [www.trackingtheworld.com](http://www.trackingtheworld.com)


Copyright © TrackingTheWorld. All rights reserved. Information in this publication supersedes that in all previously published material. Specification and price change privileges reserved. All trade names referenced are the service marks, trademarks, or registered trademarks of their respective companies.

**Table 4. Description of 6 PIN Connections**

Index	Description	Comment
1	VIN	External DC power input, 8-16V
2	GND	GND
3	IGN	Ignition input, positive trigger
4	IN1	Digital input, negative trigger
5	OUT2	Open drain, 150mA max
6	OUT1	Open drain, 150mA max ,with latch circuit

## 2.4. AVL-55 User Cable Color

**Table 5. AVL-55 User Cable Colour definition**

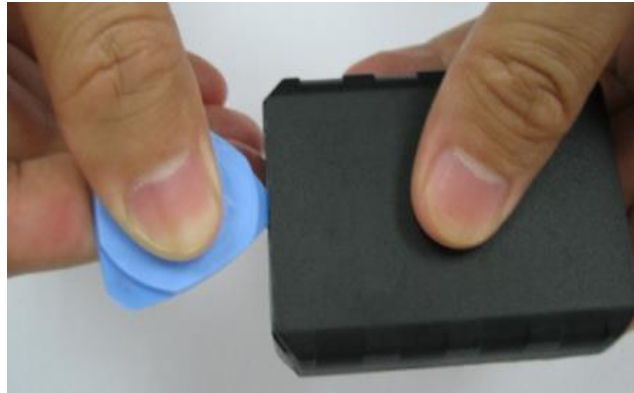
Definition	Color	PIN No	Cable
VIN	Red	1	
GND	Black	2	
IGN	White	3	
IN1	Orange	4	
OUT2	Green	5	
OUT1	Blue	6	

**For More Information:** Please contact TrackingTheWorld, 1633 Bayshore Highway, Suite 390, Burlingame, CA. 94010, USA  
 Phone: +1.650.692.8100 – Email: [info@trackingtheworld.com](mailto:info@trackingtheworld.com) – Website: [www.trackingtheworld.com](http://www.trackingtheworld.com)

Copyright © TrackingTheWorld. All rights reserved. Information in this publication supersedes that in all previously published material. Specification and price change privileges reserved. All trade names referenced are the service marks, trademarks, or registered trademarks of their respective companies.

## 3 .Getting Started

### 3.1. Opening the Case



**Figure 3. Opening the Case**

Insert the triangular-pry-opener into the gap of the case as shown below, push the opener up until the case unsnapped.

### 3.2. Closing the Case



**Figure 4. Closing the Case**

Place the cover on the bottom in the position as shown in the following figure. Slide the cover against the direction of the arrow until it snapped.

**For More Information:** Please contact TrackingTheWorld, 1633 Bayshore Highway, Suite 390, Burlingame, CA. 94010, USA  
Phone: +1.650.692.8100 – Email: [info@trackingtheworld.com](mailto:info@trackingtheworld.com) – Website: [www.trackingtheworld.com](http://www.trackingtheworld.com)

Copyright © TrackingTheWorld. All rights reserved. Information in this publication supersedes that in all previously published material. Specification and price change privileges reserved. All trade names referenced are the service marks, trademarks, or registered trademarks of their respective companies.

### 3.3. Installing a SIM Card

Open the case and ensure the unit is not powered (unplug the 6Pin cable and switch the internal battery to off position). Slide the holder right to open the SIM card. Insert the SIM card into the holder as shown below with the gold-colored contact area facing down taking care to align the cut mark. Close the SIM card holder. Close the case.



**Figure 5. SIM Card Installation**

### 3.4. Installing the Internal Backup Battery



**Figure 6. Backup Battery Installation**

There is an internal backup Li-ion battery.

**For More Information:** Please contact TrackingTheWorld, 1633 Bayshore Highway, Suite 390, Burlingame, CA. 94010, USA  
Phone: +1.650.692.8100 – Email: [info@trackingtheworld.com](mailto:info@trackingtheworld.com) – Website: [www.trackingtheworld.com](http://www.trackingtheworld.com)

Copyright © TrackingTheWorld. All rights reserved. Information in this publication supersedes that in all previously published material. Specification and price change privileges reserved. All trade names referenced are the service marks, trademarks, or registered trademarks of their respective companies.

### 3.5. Switch ON the Backup Battery

To use the AVL-55 backup battery, the switch must be at the ON position. Switch on the case and ON/OFF position are shown below.



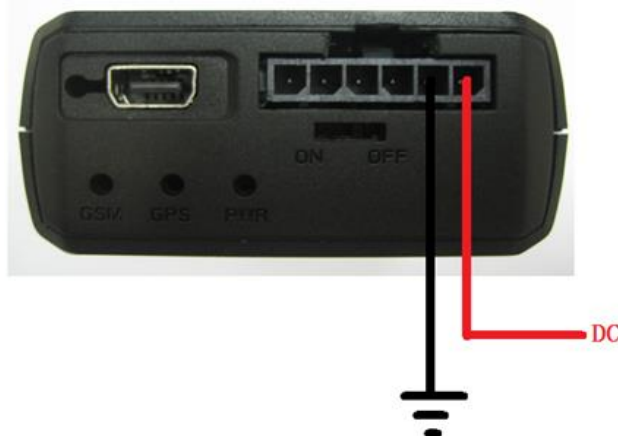
**Figure 7. Switch and ON/OFF position**

Note:

- 1-The switch must be on the “OFF” position when shipped on an aircraft.
- 2-When the switch is on the “OFF” position; the battery cannot be charged or discharged.
- 3-To reset the device: Remove the external DC power and second switch off the backup battery. And then supply the external power and switch on the backup battery.

### 3.6. Power Connection

PWR (PIN1) / GND (PIN2) are the power input pins. The input voltage range for this device is from 8V to 16V. The device is designed to be installed in vehicles that operate on 12V vehicle without the need for external transformers.



**Figure 8. Typical Power Connection**

**For More Information:** Please contact TrackingTheWorld, 1633 Bayshore Highway, Suite 390, Burlingame, CA. 94010, USA  
Phone: +1.650.692.8100 – Email: [info@trackingtheworld.com](mailto:info@trackingtheworld.com) – Website: [www.trackingtheworld.com](http://www.trackingtheworld.com)

Copyright © TrackingTheWorld. All rights reserved. Information in this publication supersedes that in all previously published material. Specification and price change privileges reserved. All trade names referenced are the service marks, trademarks, or registered trademarks of their respective companies.

### 3.7. Ignition Detection

**Table 6. Electrical Characteristics of Ignition Detection**

Logical State	Electrical State
Active	5.0V to 32V
Inactive	0V to 3V or Open



**Figure 9. Typical Ignition Detection**

IGN (Pin3) is used for ignition detection. It is strongly recommended to connect this pin to ignition key “RUN” position as shown up.

An alternative to connecting to the ignition switch is to find a non-permanent power source that is only available when the vehicle is running. For example the power source for the FM radio.

IGN signal can be configured to start transmitting information to backend server when ignition is on; and enter power saving mode when ignition is off.

### 3.8. Digital Inputs

There are one general purpose digital inputs on AVL-55. They are all negative trigger.

**Table 7. Electrical Characteristics of the digital inputs**

Logical State	Electrical Characteristics
Active	0V to 0.8V
Inactive	Open

The following diagram shows the recommended connection of a digital input.

**For More Information:** Please contact TrackingTheWorld, 1633 Bayshore Highway, Suite 390, Burlingame, CA. 94010, USA  
Phone: +1.650.692.8100 – Email: [info@trackingtheworld.com](mailto:info@trackingtheworld.com) – Website: [www.trackingtheworld.com](http://www.trackingtheworld.com)

Copyright © TrackingTheWorld. All rights reserved. Information in this publication supersedes that in all previously published material. Specification and price change privileges reserved. All trade names referenced are the service marks, trademarks, or registered trademarks of their respective companies.



**Figure 10. Typical Digital Input Connection**

### 3.9. Digital Outputs

There are two digital outputs on AVL-55. All are of open drain type and the maximum drain current is 150mA. Each output has the built-in over current and recovery PTC fuse

**For More Information:** Please contact TrackingTheWorld, 1633 Bayshore Highway, Suite 390, Burlingame, CA. 94010, USA  
 Phone: +1.650.692.8100 – Email: [info@trackingtheworld.com](mailto:info@trackingtheworld.com) – Website: [www.trackingtheworld.com](http://www.trackingtheworld.com)

Copyright © TrackingTheWorld. All rights reserved. Information in this publication supersedes that in all previously published material. Specification and price change privileges reserved. All trade names referenced are the service marks, trademarks, or registered trademarks of their respective companies.

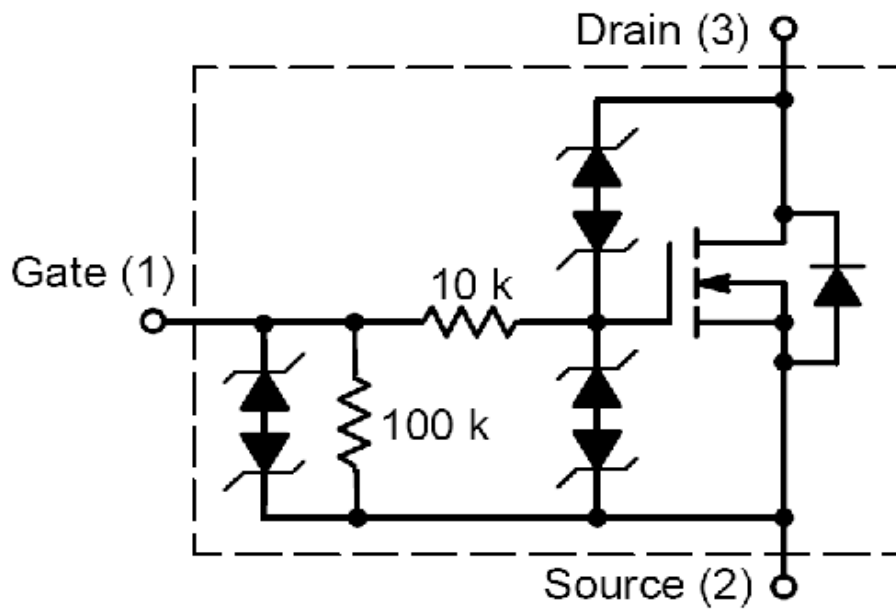


Figure 11. Digital Output Internal Drive Circuit

Table 8. Electrical Characteristics of Digital Outputs

Logical State	Electrical Characteristics
Enable	<1.5V @150mA
Disable	Open drain

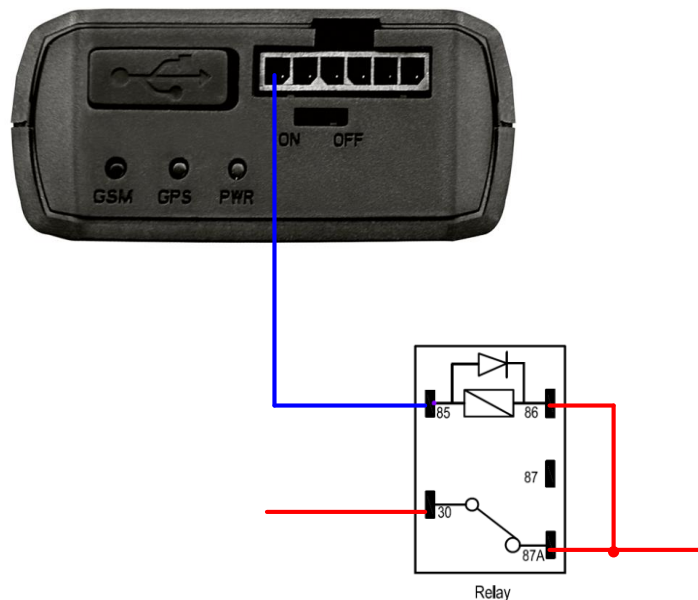


Figure 12. Typical Connection with Relay

**For More Information:** Please contact TrackingTheWorld, 1633 Bayshore Highway, Suite 390, Burlingame, CA. 94010, USA  
Phone: +1.650.692.8100 – Email: [info@trackingtheworld.com](mailto:info@trackingtheworld.com) – Website: [www.trackingtheworld.com](http://www.trackingtheworld.com)

Copyright © TrackingTheWorld. All rights reserved. Information in this publication supersedes that in all previously published material. Specification and price change privileges reserved. All trade names referenced are the service marks, trademarks, or registered trademarks of their respective companies.





**Figure 13. Typical Connection with LED**

Note:

1 - OUT1 will latch the output state during reset.

2- Many modern relays come with a flyback diode pre-installed internal to the relay itself. If the relay has this diode, insure the proper relay polarity connected is used. If this diode is not internal, it should be added externally. A common diode such as a 1N4004 will work in most circumstances.

### 3.10. Device Status LED



**Figure 14. AVL-55 LED on the Case**

AVL-55 has three status led that GSM GPS PWR led.

**For More Information:** Please contact TrackingTheWorld, 1633 Bayshore Highway, Suite 390, Burlingame, CA. 94010, USA  
Phone: +1.650.692.8100 – Email: [info@trackingtheworld.com](mailto:info@trackingtheworld.com) – Website: [www.trackingtheworld.com](http://www.trackingtheworld.com)

Copyright © TrackingTheWorld. All rights reserved. Information in this publication supersedes that in all previously published material. Specification and price change privileges reserved. All trade names referenced are the service marks, trademarks, or registered trademarks of their respective companies.

**Table 9. Definition of Device status and LED**

LED	Device status	LED status
GSM (note1)	Device is searching GSM network	Fast flashing (Note3)
	Device has registered to GSM network.	Slow flashing (Note4)
	SIM card needs pin code to unlock.	ON
GPS (note 2)	GPS chip is powered off	OFF
	GPS sends no data or data format error.	Slow flashing
	GPS chip is searching GPS info.	Fast flashing
	GPS chip has gotten GPS info.	ON
PWR (note 2)	No external power and internal battery voltage is lower than 3.35V.	OFF
	No external power and internal battery voltage is below 3.5V.	Slow flashing
	External power in and internal battery is charging	Fast flashing
	External power in and internal battery is fully charged	ON

Note:

1 - GSM LED cannot be configured.

2 - GPS LED and PWR LED can be configured to turn off after a period of time using the configuration tool

3 - Fast flashing is about 60ms ON/ 780ms OFF

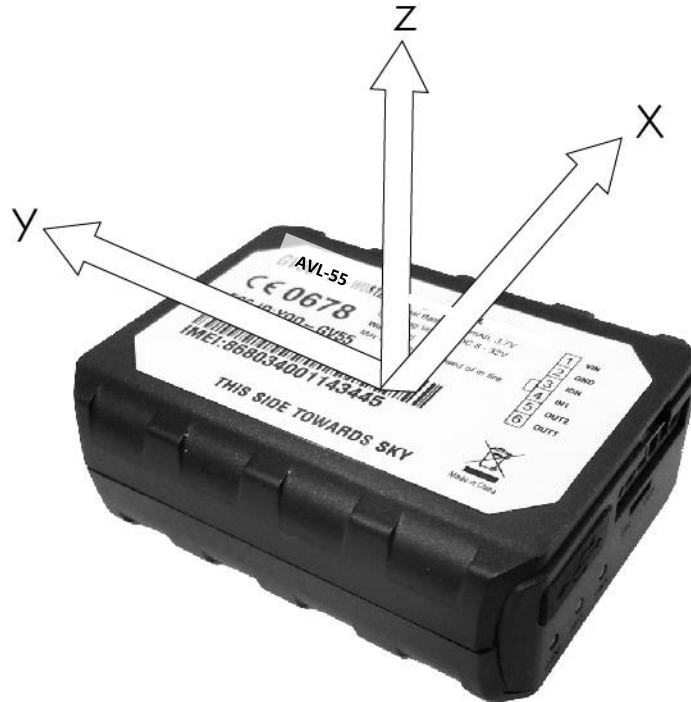
4 - Slow flashing is about 60ms ON/ 1940ms OFF

### 3.11. Motion Sensor direction

AVL-55 has an internal 3-axis accelerometer supporting driving behavior monitoring, power conservation and motion detection. The following is the direction of the motion sensor.

**For More Information:** Please contact TrackingTheWorld, 1633 Bayshore Highway, Suite 390, Burlingame, CA. 94010, USA  
Phone: +1.650.692.8100 – Email: [info@trackingtheworld.com](mailto:info@trackingtheworld.com) – Website: [www.trackingtheworld.com](http://www.trackingtheworld.com)

Copyright © TrackingTheWorld. All rights reserved. Information in this publication supersedes that in all previously published material. Specification and price change privileges reserved. All trade names referenced are the service marks, trademarks, or registered trademarks of their respective companies.



**Figure 15. Motion sensor direction**

**For More Information:** Please contact TrackingTheWorld, 1633 Bayshore Highway, Suite 390, Burlingame, CA. 94010, USA  
Phone: +1.650.692.8100 – Email: [info@trackingtheworld.com](mailto:info@trackingtheworld.com) – Website: [www.trackingtheworld.com](http://www.trackingtheworld.com)

Copyright © TrackingTheWorld. All rights reserved. Information in this publication supersedes that in all previously published material. Specification and price change privileges reserved. All trade names referenced are the service marks, trademarks, or registered trademarks of their respective companies.