

# TrimTrac Users Manual



<b>Contents of the Box</b> . . . . .	<b>1</b>
<b>Sign Up for Service</b> . . . . .	<b>2</b>
<b>Activation &amp; Hardware Setup</b> . . . . .	<b>3</b>
<b>Viewing Data</b> . . . . .	<b>4</b>
<b>Downloading Data</b> . . . . .	<b>5</b>
<b>Microsoft Virtual Earth</b> . . . . .	<b>6</b>
<b>Google Earth</b> . . . . .	<b>7</b>
<b>Reports</b> . . . . .	<b>8</b>
<b>GeoFences</b> . . . . .	<b>9</b>
<b>Polling Feature</b> . . . . .	<b>10</b>
<b>Troubleshooting</b> . . . . .	<b>11</b>

For Tech Support call **650-692-2816**



1:  
Contents of  
the Box

TrimTrac



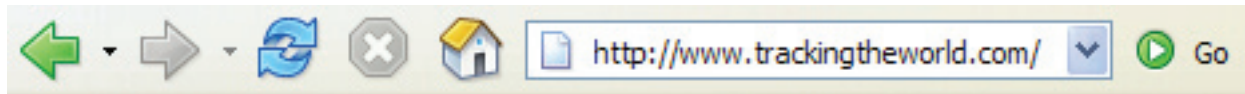
Cellular SIM Card





## 2: Sign Up for Service

Go to [www.TrackingTheWorld.com](http://www.TrackingTheWorld.com) to sign up.



Please pay the activation fee and sign up for monthly service. The activation of your tracker will not be completed until these payments are received.



TrackingTheWorld.com accepts payment with PayPal or Credit card. You may also call us directly and sign up over the phone.

**650-692-2816**  
**8:30-5:00 Monday-Friday**

Follow the instructions on the website and provide the required information. Be sure that the name associated with the PayPal account and credit card or bank account match.

There are several options for TrimTrac service. Visit our website for current pricing.



### 3: Activation & Hardware Setup

1. Open the back of the unit and install the SIM card as shown.



2. Insert the batteries as shown.



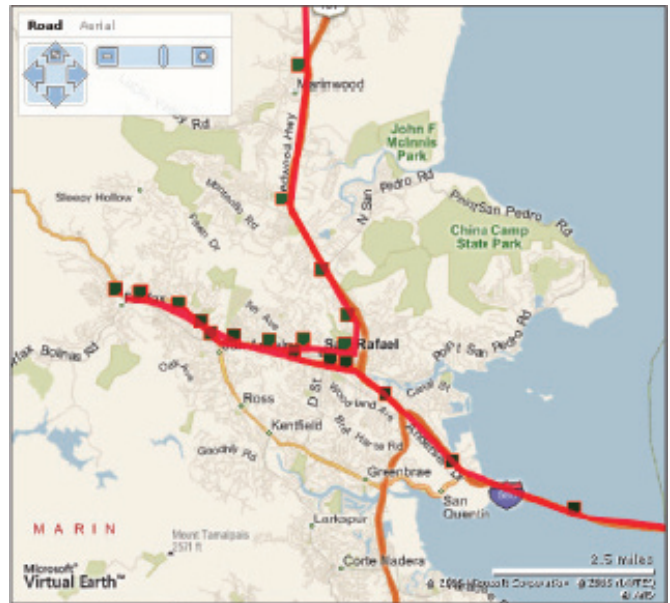
3. This unit powers up as soon as batteries are installed. After the batteries are installed and you have received your map link from TrackingTheWorld.com, place the unit on the dash of your vehicle with the screw facing down and drive for about 20 minutes. When you return and look at the map page, it will have moved to your location.





## 4: Viewing Data

Your map page requires Internet Explorer 8.0 or higher in order to function properly. To view dates, times and speed of a record, move your cursor over a specific point.



Virtual Earth

≤	May 2006						≥
Sun	Mon	Tue	Wed	Thu	Fri	Sat	
30	1	2	3	4	5	6	
7	8	9	10	11	12	13	
14	15	16	17	18	19	20	
21	22	23	24	25	26	27	
28	29	30	31	1	2	3	
4	5	6	7	8	9	10	

Use the calendar to view historical data of the movements your tracker has made. Blue dates have data, white dates do not. To change the month click the arrows on the top left and right.



## TrimTrac

## 5: Downloading Data

The software automatically saves all location information sent by your tracker to our server. If you wish to keep backups of your tracking data or to use the data in other mapping programs, simply select the date you wish to download using the calendar. Then click on the "Download .csv data" link. The left photo shows the calendar from the current day and the right photo shows the calendar from 2 days before.

FOUND USER:	
Last Report:	41 secs
Altitude:	10
Speed:	1
Course:	271
<input checked="" type="checkbox"/> Refresh:	<input type="text" value="121"/>
Latitude:	
Longitude:	
<a href="#">Download .csv data</a>	



You cannot download data for the current day.

FOUND USER:	
Last Report:	41 secs
Altitude:	10
Speed:	1
Course:	271
<input checked="" type="checkbox"/> Refresh:	<input type="text" value="121"/>
Latitude:	
Longitude:	
<a href="#">Download .csv data</a>	

≤	May 2006						≥
Sun	Mon	Tue	Wed	Thu	Fri	Sat	
30	1	2	3	4	5	6	
7	8	9	10	11	12	13	
14	15	16	17	18	19	20	
21	22	23	24	25	26	27	
28	29	30	31	1	2	3	
4	5	6	7	8	9	10	

Dates which have saved tracking data will appear in blue and the current day will be displayed in yellow.

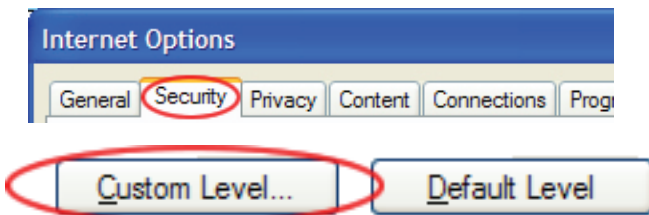
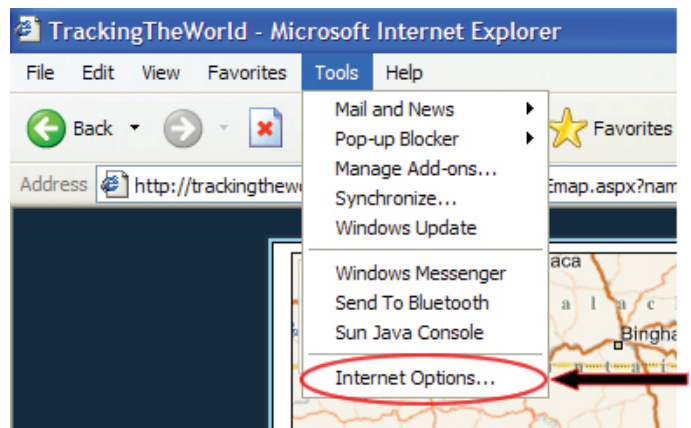
≤	May 2006						≥
Sun	Mon	Tue	Wed	Thu	Fri	Sat	
30	1	2	3	4	5	6	
7	8	9	10	11	12	13	
14	15	16	17	18	19	20	
21	22	23	24	25	26	27	
28	29	30	31	1	2	3	
4	5	6	7	8	9	10	



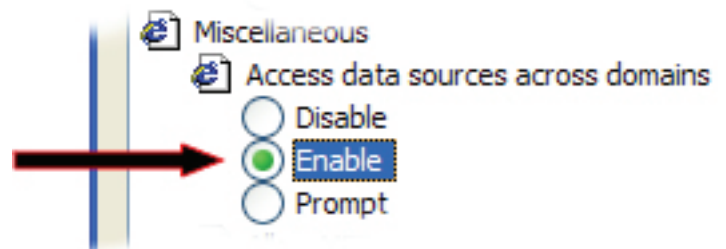
## 6: Microsoft Virtual Earth

If you do not see an address when clicking on a breadcrumb, you will need to change your Internet Explorer browser setting. Select the "Tools" drop down menu, and click on "Internet Options..."

Select the "Security" tab.  
Then Select "Custom Level."

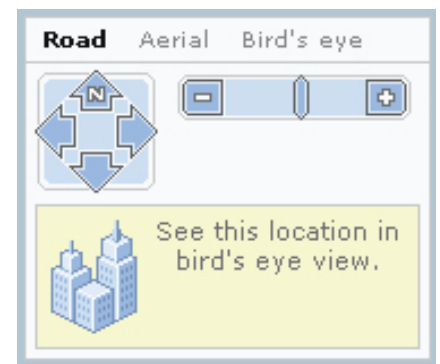
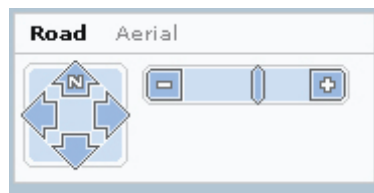


Make sure that the "Access data sources across domains" option is enabled.



Most major US cities have special "Birds Eye View" mapping. When Birds Eye View mode is available for an area you are viewing, the navigation tool shown to the right will change to allow you to switch to Birds Eye View.

No Birds Eye View Available

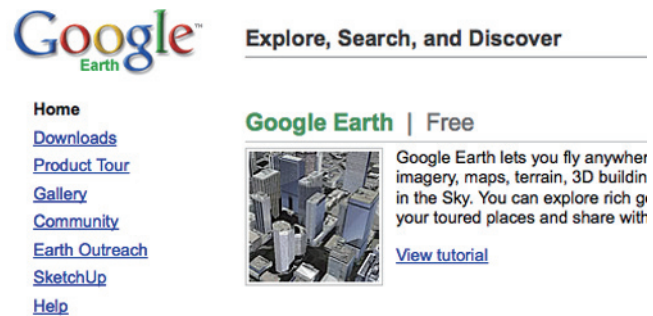


Birds Eye View Available

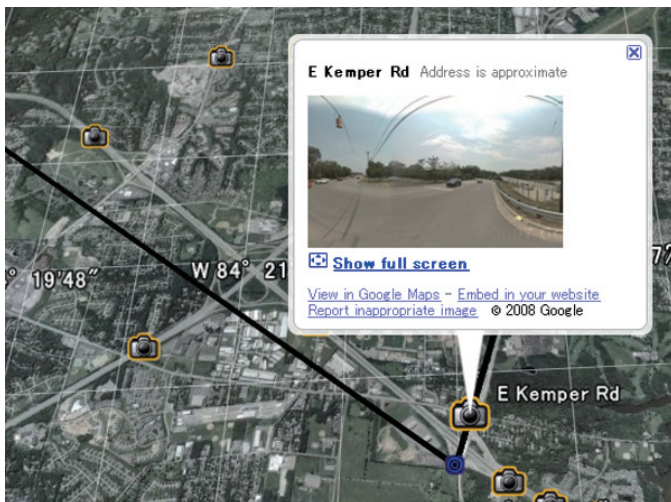


## 7: Google Earth

Download the free version of Google Earth from <http://earth.google.com>.



After installation, select “Google Earth Network Link” under the calendar on your tracking page.



Google Earth will automatically open and display the current track on that map.

For help with using Google Earth’s features, visit <http://earth.google.com>.



## 8: Reports

### Driving Report:

Click the "Driving Report" link.  
The report will display in a new window. You must use Internet Explorer to view the reports.

Latitude:	47.1960929
Longitude:	-122.1498134
Download Data	<a href="#">Drive Report</a> <a href="#">Stats</a>

### Driving Report for 073091 on 7/10/2007

DepartTm	Address	Max Spd	ArriveTm	DrvTmMin	Dx
11:58:57 PM	2436 NW Thurman St, Portland, OR 97210	0	11:45:22 AM	706	1
11:45:22 AM	2436 NW Thurman St, Portland, OR 97210	21	11:59:21 AM	14	1.4
2:02:40 PM	699 SW Clay St, Portland, OR 97201	29	2:10:40 PM	8	1.1
2:28:24 PM	1360 NW 19th Ave, Portland, OR 97209	2	2:30:24 PM	2	0.8
5:21:13 PM	1852 NW 24th Ave, Portland, OR 97210	42	5:37:13 PM	16	2.1
6:30:02 PM	480 NW 9th Ave, Portland, OR 97209	35	6:42:02 PM	12	4.1
9:19:05 PM	NE 13th Ave, Portland, OR 97232	0	9:19:05 PM	0	0
Destination	1937 NW 24th Ave, Portland, OR 97210				
<b>Totals:</b>				<b>12h 38m</b>	<b>10.5 miles</b>

Travel data includes street address, duration of stops, mileage, speed and other daily travel data.

These reports can be printed by selecting "File" and then "Print" from within Internet Explorer.

## Stats:

Click the "Stats" link.  
The report will display in a new window. You must use Internet Explorer to view the reports.

Latitude:	47.1960929
Longitude:	-122.1498134
<a href="#">Download Data</a>	<a href="#">Drive Report</a> <a href="#">Stats</a>

## September 2008 Stats for 345862

Day	DxDriven	DriveTime	IdleTime	StartTime	StartAdr	EndTime	EndAdr
3	24.1	3.9	1.7	17:34	(Start Address Will Appear Here.)	23:11	(End Address Will Appear Here.)
4	30.6	2.9	3.6	11:45	(Start Address Will Appear Here.)	18:15	(End Address Will Appear Here.)
<b>Totals:</b>	<b>54.7 Miles</b>	<b>6.8 hrs</b>	<b>5.3 hrs</b>				

## Miles Driven 2008

The Stats link allows you to see the data for each day data was sent for the month displayed and the monthly/yearly total are of Miles Driven for each month.

These reports can be printed by selecting "File" and then "Print" from within Internet Explorer.

Month	345862
Jan	0
Feb	0
Mar	0
Apr	0
May	0
Jun	0
Jul	0
Aug	0
Sep	54.6
Oct	0
Nov	0
Dec	0
<b>Totals:</b>	<b>54.6</b>



## 9: GeoFences

A GeoFence is a virtual fence (a square around a certain location) that you can preset online. When the TrimTrac enters/leaves the fence, you will receive an alert via email or a text message on your cellular phone by entering a plus symbol, your country code followed by your cellular phone number. You will receive a text message on your phone when the GeoFence has been triggered.

To set up a GeoFence, first click the “GeoFence” button.

GeoFence

Click on the drop down window “Both”. Under this menu you can choose whether you want an alert when the vehicle enters and exits, only enters, only exits, or one shot (alert when the vehicle exits one time). Once a GeoFence is set, it will remain in place until it is deleted. This does not apply for the one shot option.

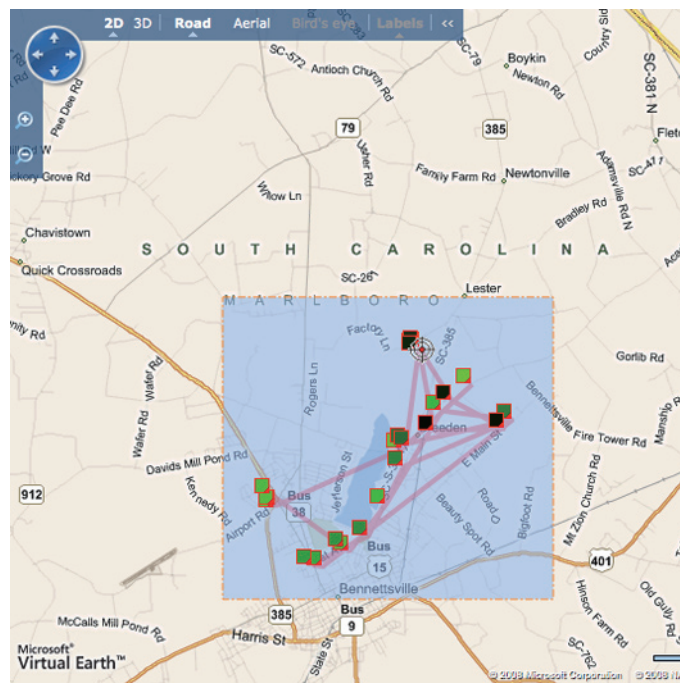
Set	Both ▼
myemail@mail.com	Password

Enter the email address you wish to receive GeoFence alerts on.

You will need to enter a password. The password is always 0000, unless specified otherwise.

**Continue to Next Page.**

Draw a GeoFence by double clicking on one part of the map and then double clicking again in a different location, surrounding the area you would like to include. An area will be highlighted on the map indicating the GeoFence area. If you are not satisfied, you can repeat this procedure to draw a different GeoFence. Once you are satisfied with the area of the fence, click on “SET”.



This can be repeated multiple times to set multiple GeoFences. To view the GeoFences that are set, click on the GeoFence button. The GeoFences are indicated on the map.

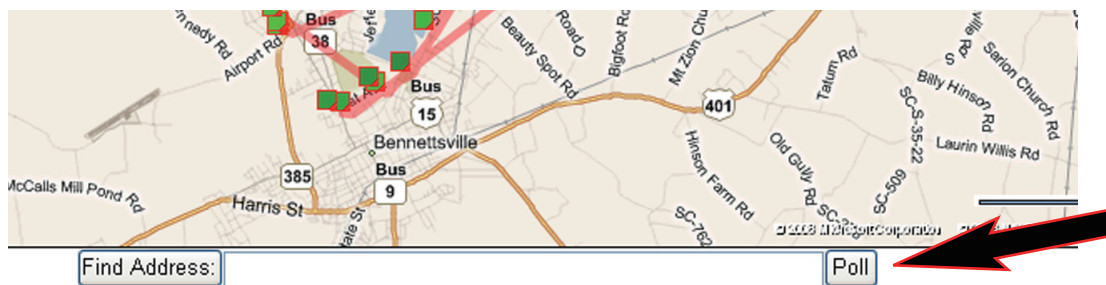
To delete a GeoFence, enter the password and click on “DELETE” indicated on the right-hand part of the GeoFence. A window pops up indicating that the GeoFence has been deleted. You must do this for every GeoFence created.



## 10: Polling Feature

Poll the tracker's current location.

1. Click on the Poll button at the bottom of the map.



2. A small new window will appear. Enter the password 0000, choose "poll" and click on Send. It will send its current location.

Device:	trimtrac
Credits:	300
LastUD:	8/25/2008 3:01:54 PM
<input type="button" value="Send"/>	
PassWd:	<input type="text"/>
<input type="text" value="poll"/> <input type="text" value="ReportFast"/> <input type="text" value="ReportMedium"/> <input type="text" value="ReportSlow"/>	



## 11: Troubleshooting

### **“My tracker has stopped sending data.”**

When the device stops transmitting its location, either the tracker is not powered, is unable to use the cellular network, or does not have a GPS fix. If you continue to have problems, retrieve your unit and replace or recharge the batteries. Then test the tracker in a controlled environment.

### **“My tracking page displays yesterday’s data.”**

Data is not updated on the map until new positions are reported. Look at the time of the “last report” on the map. If the time of the last report is before midnight central standard time, the current data is from the day before. Your tracker may have stopped sending data, please retrieve the tracker for testing.

**If you continue to have trouble or need assistance with your tracker, please call our customer support department at 650-692-2816.**